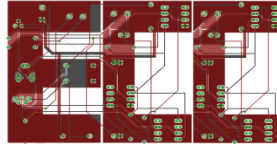


P.O. BOX 25412
Providence, RI 02905



East Coast Circuits

Email: Eastcoastcircuits@gmail.com
Fax: 973-631-1284

Random Lighting Circuit 1.0 (RLC-1)

Instructions

Getting Started

Thank you for purchasing the E.C.C. Random Lighting Circuit 1.0 (RLC-1). Please take a moment to read and familiarize with the following instructions prior to installing this circuit. The Random Lighting Circuit 1.0 (RLC-1) simulates the behavior of your house or apartment lights turning ON/OFF. The LED's can be installed in different rooms to simulate a person entering the room and turning the lights ON as well as turning the lights OFF when leaving such.

The Random Lighting Circuit (**RLC-1**) operates as described next. Terminals labeled **R**, **R-**, **Y** and **G** illustrate the wire connections for the negative lead of the LED's and Terminal **C** illustrates the **Common** or **Positive**. Once power is supplied to the board the circuit will start a count which turns ON and OFF the LED's at random. The timing ranges from 5 to 45 seconds. The circuit **Output** is **3V** which makes it suitable for use with LEDs and 3V LED strips without the use of resistors. The **RLC-1** is capable of handling **six (6)** LED's at once.

You should make all connections to the circuit prior to applying power. You can mount this circuit anywhere. We suggest mounting the circuit under the layout using #4 screws with washers or inside the structure being animated. The circuit is equipped with holes for easy mounting; do not enlarge holes or cut jumper wire as doing so can cause damage to the circuit and will void your warranty.

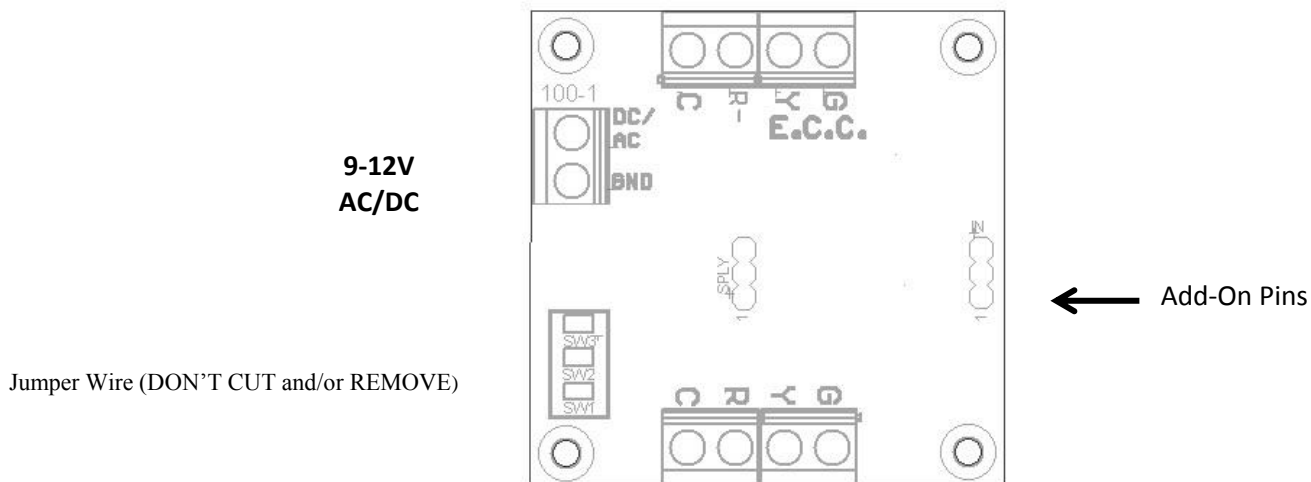


Figure 1- (Wiring)

Power

The **RLC-1** accepts AC or DC power (9V- 12V), **100mA Max**. This circuit is designed to operate under any straight DC or AC current provided the voltage doesn't exceed **12V, 100mA**. If you are using a power pack transformer we strongly recommend using the fixed AC output terminals. Not doing so will cause the circuit to overheat and fail, and will void the warranty.

Warranty

This Circuit is warranted to be free from defects in workmanship and materials for a period of ninety (90) days from the date of purchase. This warranty covers all defects experienced during normal operation with the exception of the following conditions:

1. If current or voltage limitations has been exceeded
2. If product has been modified in any way (e.g. Missing/Additional Components, Soldering)
3. If product has been mishandled or abused.

Requests for warranty service must contact us first to receive a RMA (Return Merchandize Authorization) at Eastcoastcircuits@gmail.com. Please include a written description of the issue and original receipt when returning the product to us.

Support

We hope the foregoing instructions are adequate for answering any questions you might have about the installation and operation of this circuit. However, if you still have any questions or problems with your circuit, technical support is available through email at Eastcoastcircuits@gmail.com.

Warning:

This product is not a toy. Keep away from children. It is not suitable for children under the age of 14, as small parts and/or broken parts may present a choking hazard. If swallowed, seek immediate medical help.

This product contains know Chemicals which are known to the state of CA to cause cancer, birth defects, or other reproductive harm